



Conferencing
AT
CHÂTEAU ÉLAN HUNTER VALLEY
THE VINTAGE GOLF CLUB



Conferences, Meetings, Events

Beautifully presented with dynamic, flexible configurations, attentive staff and a comprehensive range of inclusions as standard, our selection of venue spaces offer the ideal setting for your next conference, meeting or event.

With the beautiful verdant surrounds of the golf course, exacting standards and the European charm of our interiors, Château Élan at The Vintage will deliver a calming and hospitable sense of place to enjoy for guests and delegates alike.

The resort is just a short 2-hour drive from Sydney or a 45-minute commute from Newcastle airport, making it ideal for full day meeting or overnight retreat.

From a sit-down team dinner for 20 to a 200 delegate conference, a 50 guest interactive team building day to an end of year cocktail event for 330, Château Élan will provide you with the setting to celebrate and the space to do business.

**THE SUBTLE DIFFERENCE
OF EXCELLENCE**





Catering

CONFERENCE MENUS

Our conference menus combine a modern take on international flavours with a focus on using fresh, local ingredients. Menu options include working lunches for on-the-go meetings as well as more substantial buffet and a la carte options for more formal events and conferences. Château Élan at The Vintage can cater for meetings of 10 to 500.

LEGENDS BAR & GRILL

With ever-evolving menus, a refined yet welcoming atmosphere and breathtaking views over the Greg Norman-designed golf course, dining options at The Legends Grill Restaurant are comprehensive and further enhanced by a cellar of rare, exciting and popular local wines.

SIGNATURE WINEMAKER DINNERS

The ultimate gourmet experience, featuring a custom-created degustation menu by our Executive Chef, paired with some of the best regional wines available in the Hunter Valley. Winemaker Dinners are organised in conjunction with one of our incredible neighbouring wineries and provide an enjoyable and intimate experience for guests.

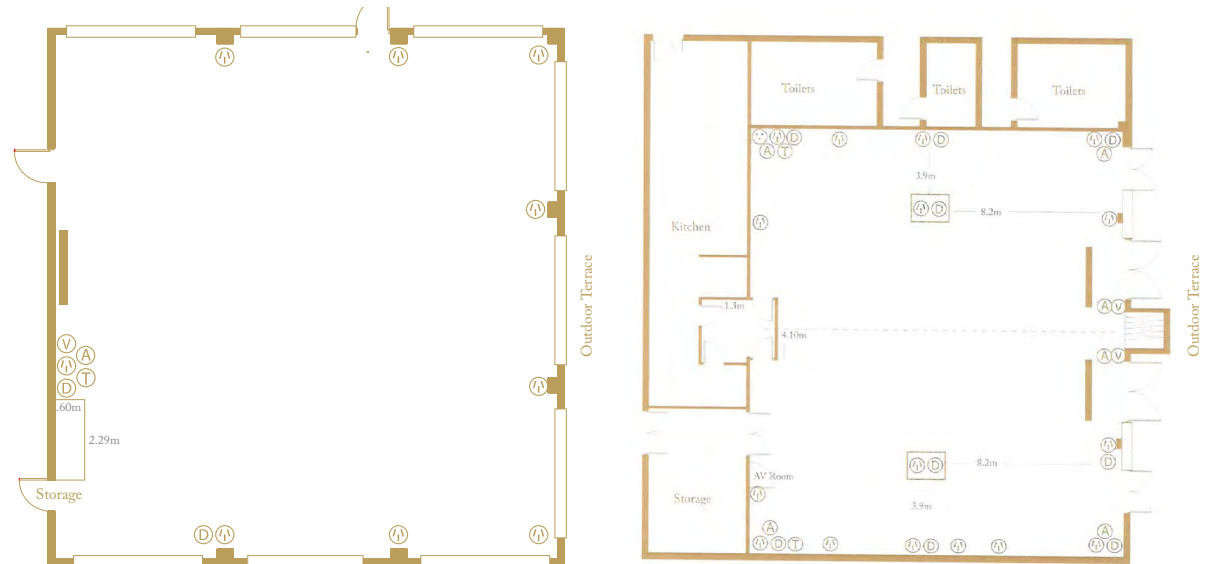




Meeting Spaces

BARRINGTON ROOM

Sitting beside the Clubhouse at the top of The Vintage Golf Course, the Barrington Room offers a modern and elegant interior and enjoys views over the manicured 18th green and valley beyond. The space allows for multiple configuration setups to suit any type of event, from 27 delegates in a Boardroom-style setting to 200 for a Cocktail-style event.



THE FOUNDERS ROOM



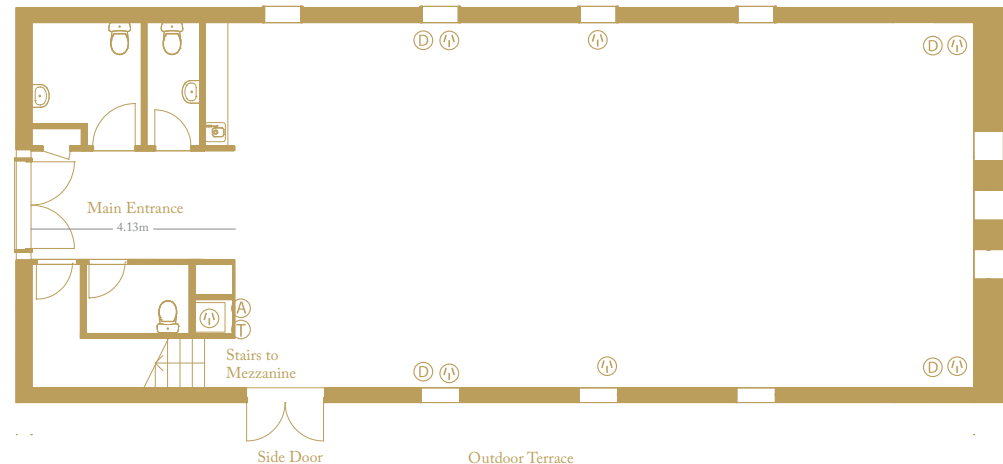
The Founders Room is the largest event space at 269sqm and is located adjacent to the elegant Château Élan Hotel. With a modern, timeless interior, the Founders Room also enjoys views over The Vintage Golf Course. This space can be divided into two separate rooms (The Founders I and The Founders II) or combined to suit up to 330 guests with a Theatre- or Cocktail-style setting. Cabaret style-settings in the Founders Room work well for 120 delegates or 48 in each room if the space is divided.



Meeting Spaces

CARRIAGE HOUSE

The Carriage House is an exquisite handcrafted, convict cut sandstone building, offering a unique atmosphere for your meeting or celebration. The space offers not only the ideal location, but also serves as a picturesque backdrop for a breakout room or team building session. This space offers multiple configurations and will suit conferences for up to 120 in a Theatre-style setting.



MARQUEES

Château Élan can also arrange private Marquee hire for your event should your guest capacity exceed those available in our event spaces. Additional costs apply for marquee and kitchen marquee setup as we do not have these permanently set on site. Marquees offer the possibility of even greater setup flexibility and are suitable for events from 100 to 500 guests.

Venue Capacity Chart

ROOMS	DIMENSIONS L X W X H	M ²	THEATRE	CLASSROOM	BOARDROOM	U-SHAPE	CABARET	DINNER	DINNER / DANCE FLOOR	COCKTAIL
The Founders Room	14.8m x 18.2m x 3.4m	269m ²	330	100	54	68	90/120	172	150	330
Founders I	14.8m x 9.7m x 3.4m	143m ²	180	60	27	32	36/48	72	60	150
Founders II	14.8m x 8.5m x 3.4m	126m ²	150	40	27	32	36/48	72	60	150
Barrington Room	13m x 13m x 5.2m*	169m ²	200	64	27	36	54/72	120	90	200
The Boardroom	6.5m x 7m x 3m	45m ²	-	-	14	-	-	14	-	-
Carriage House	15m x 7m x 7.5m**	116m ²	120	-	-	-	-	-	-	120

*Height to bottom of beam in Barrington is 2.8m

**Height at side walls of Carriage House is 3.3m



Unique Meeting Spaces

OUTDOOR AREAS

Each of our event spaces overlook the beautiful verdant surrounds of the golf course, offering plentiful space for outdoor dining, breakout areas, team fitness sessions and the opportunity to enjoy your morning and afternoon tea breaks outdoors.

CORPORATE & GROUP GOLF

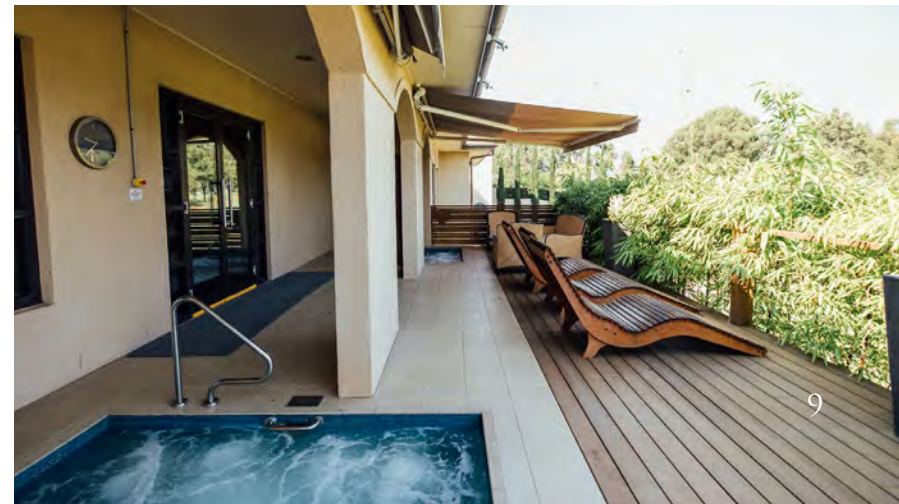
Corporate or social golf groups are our speciality here at The Vintage Golf Club. Your dedicated golf group coordinator will be pleased to put together a package that best suits your needs, including signage, awards, food and beverages - all you have to worry about is your golf game!

EXCLUSIVE GROUP SPA PACKAGES

Relax your mind, body and soul in a range of spa rituals and beauty treatments that will restore clarity, promote wellness and relieve you from the stresses of life. Our Reflection and Hydrolounge areas are the ultimate space for your teams to come together and enjoy a little pampering.

WELLNESS

Why not add something extra to your conference and start the day with a private yoga session overlooking the rolling greens? We offer multiple on-site options for your team to experience the great outdoors and increase their fitness levels, including electric bike, tennis, swimming and gymnasium.



Accommodation, Spa & Golf

CHÂTEAU ÉLAN ACCOMMODATION

At Château Élan at The Vintage, we have room options to suit your every need. Our private villas enjoy an elevated position overlooking the verdant greenery of the fairway. Cascading down the hillside from the main hotel, all rooms have balconies or terraces to make the most of the stunning views, along with spacious layouts and elegant furnishings. The main hotel building accommodates 20 exclusive Spa Suites.

Spa Suite *(20 rooms)*

Sumptuous Spa Suites with King sized beds are designed for absolute comfort, offering 60 square metres of space. Exclusive to the Suite is an open, plinth-mounted spa bath and an Ergo motion king size bed offering multiple massage therapies and 'zero-gravity' function.

Villa Studio *(40 rooms)*

Wake in your private King Room to views of The Vintage fairways and Hunter Valley, seen through the generous glass doors that lead to your balcony or terrace. The open-plan bedroom and living area, plus ensuite bathroom, amount to 58 square metres of elegant living. Guest parking is located beside each room.

Villa One Bedroom Apartment *(40 rooms)*

Your One-Bedroom Apartment is a luxurious self-contained living space of 96 square metres, with an extra-spacious bedroom and bathroom, separate dining area plus a designer kitchen with quality appliances. A two-way open fireplace between living and dining areas lends character as well as warmth in the cooler seasons.

Villa Two Bedroom Apartment

The conjoining of a Villa Studio and Villa One Bedroom Apartment provides 154 square metres of indoor and outdoor living space, perfect for a family or group of friends.



Recreational Facilities

THE VINTAGE GOLF COURSE

The Vintage Golf Course is nestled amid the rolling hills of Pokolbin and the famous vineyards. This 18-hole Greg Norman-design championship golf course was voted the Number 1 Public Access course in NSW. The par 71, 6310 metre course offers golfers of all levels a challenge with its distinctive undulating landscape and signature bunkering.

The onsite Richard Mercer Golf Academy provides individual and group golfing lessons and caters to golf players of all levels.

THE SPA

The Spa at Château Élan consists of 17 beautifully appointed treatment rooms and a team of therapists that understand care, comfort and discretion. The Spa menu is delivered with French Thalgo products, along with their signature Terrake face and body rituals. Our Spa team will custom-design a special menu to accommodate you and your team.

TENNIS COURT & SWIMMING POOL

At Château Élan, our onsite facilities include a gym with all the latest equipment, two tennis courts and a heated swimming pool. These sporting amenities are available for use by all our guests, with racquets available for hire from reception.

ASK OUR EVENT TEAM TO INCLUDE GOLF OR SPA TREATMENTS IN YOUR CONFERENCE PROPOSAL.





Team Building

PINNACLE TEAM BUILDING

Corporate team building events, conference activities, night activities and much more! Create energy and motivate your employees with corporate team building activities from Pinnacle Team Events. A completely mobile service designed to ensure the success of your next conference, team day, training session or company celebration - wherever it may be.

BE CHALLENGED

Be Challenged's unique approach to helping businesses reach their full potential means your team will learn while having fun. In each of the team building programs teamwork, collaboration and communication are the key learning outcomes along with practical skills around leadership and strategic thinking.

WINE TOURS

Vineyard Shuttle Service is the most referred wine tour company in the Hunter Valley. Vineyard Shuttles is a family owned business who have been servicing the Hunter Region for over 20 years.

SUTTON ESTATE

Sutton Estate showcase a selection of creative, mind-blowing experiences. Their games and experiences cater to groups of all types and sizes. Whether you're looking for a lovely electric bike ride in the Hunter Valley, an escape room experience or to smash a few wine bottles in the Smash Room, they have got the experience for you!



Travel Details

LOCATION & TRANSPORT

You will find us just 50 minutes west from Newcastle in the stunning Hunter Valley Wine Country.

Château Élan is easy to reach by either road, air or train.

BY ROAD

Château Élan is 2 hours drive north from Sydney and only 50 minutes from Newcastle.

BY AIR

Newcastle Airport is only 50 minutes away from Château Élan. let us organise Airport Transports for you and your delegates.

BY RAIL

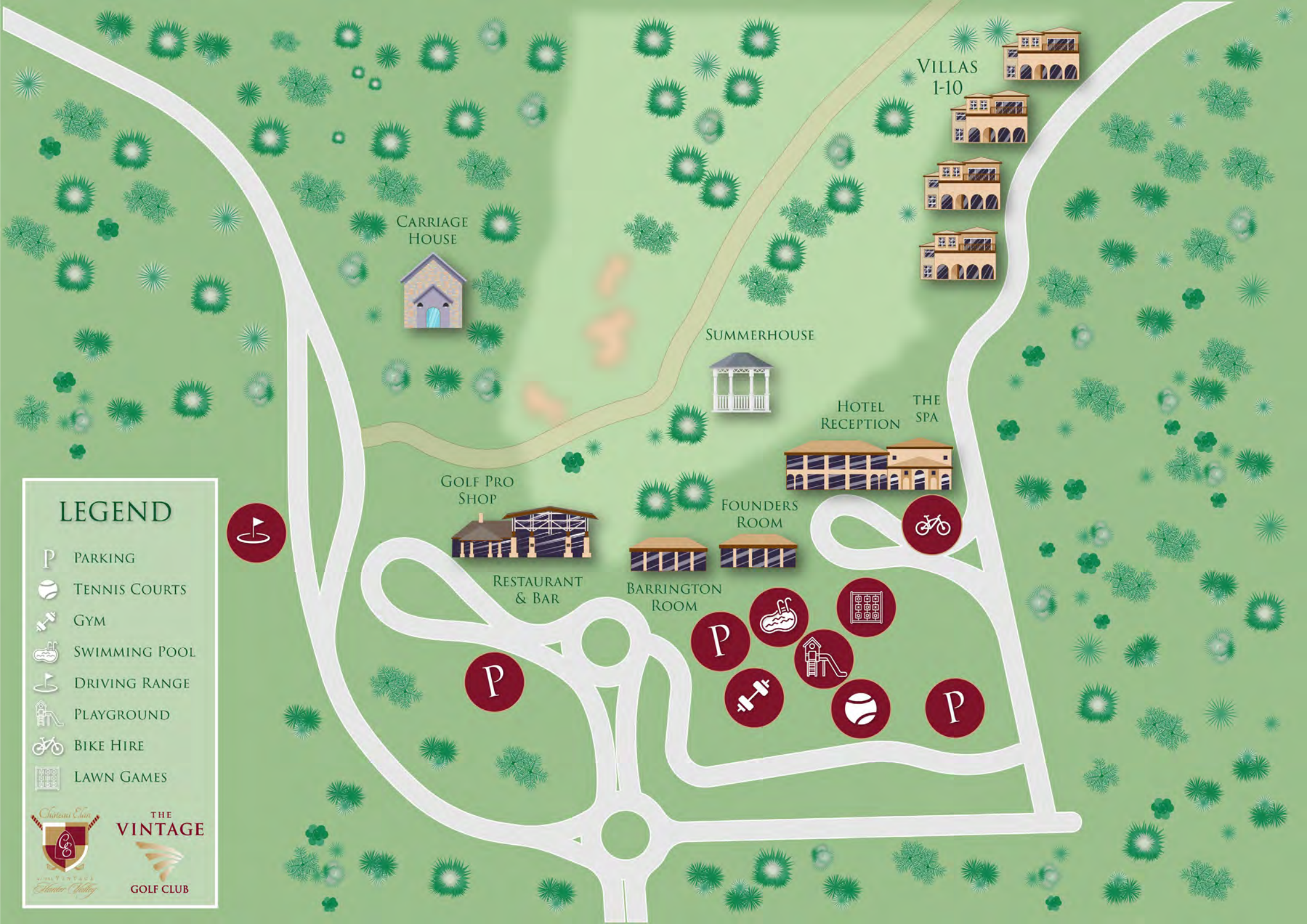
Morriset Train Station is 50 minutes away from Château Élan. let us organise Rail Transfers for you and your delegates.

LEGEND

- PARKING
- TENNIS COURTS
- GYM
- SWIMMING POOL
- DRIVING RANGE
- PLAYGROUND
- BIKE HIRE
- LAWN GAMES

THE VINTAGE

GOLF CLUB



Conferencing

AT

**CHÂTEAU ÉLAN HUNTER VALLEY
THE VINTAGE GOLF CLUB**

VINTAGE DRIVE POKOLBIN NSW 2320
02 4998 2603 | EVENTS@THEVINTAGE.COM.AU

WWW.CHATEAUELAN.COM.AU

